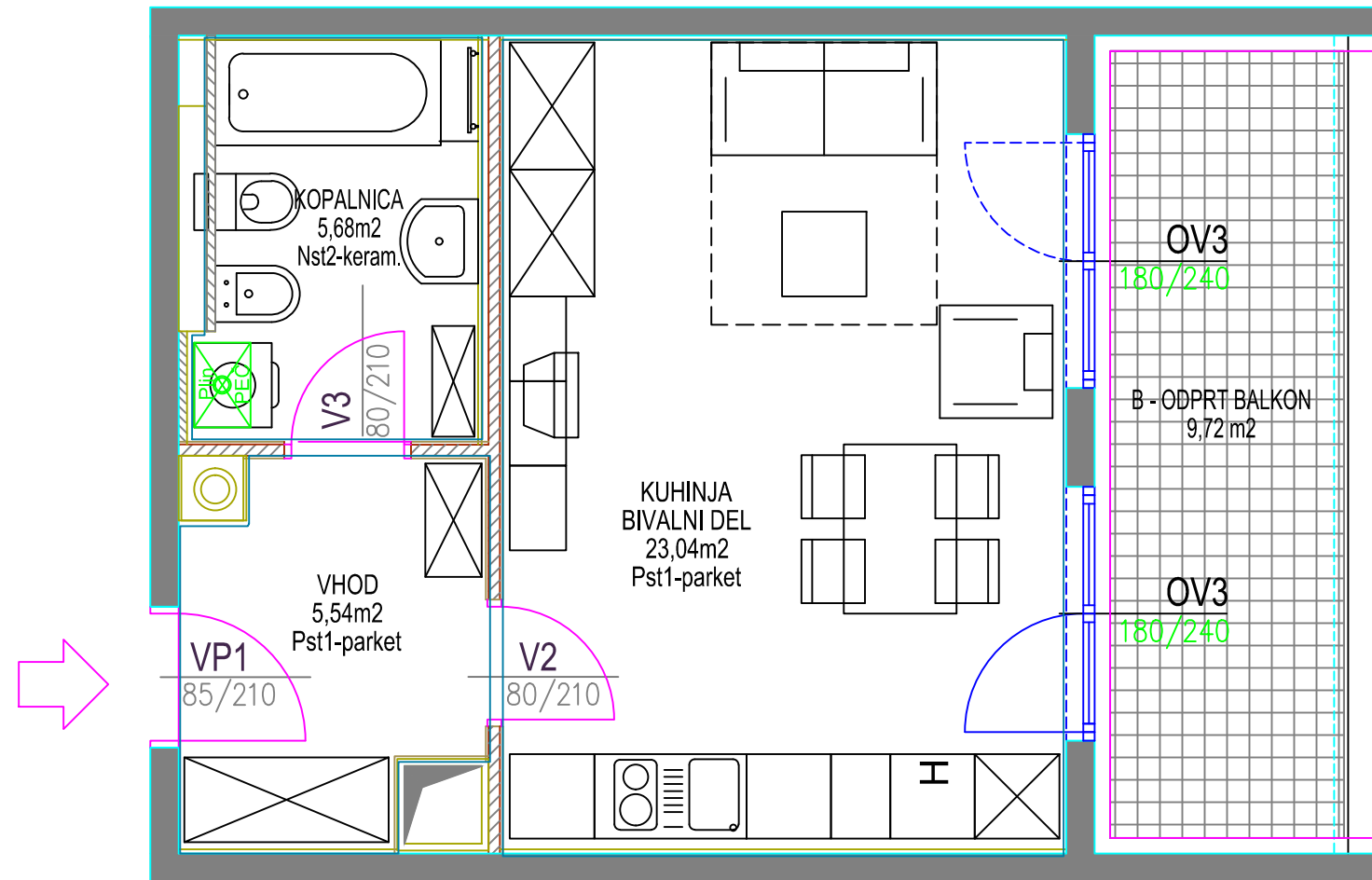


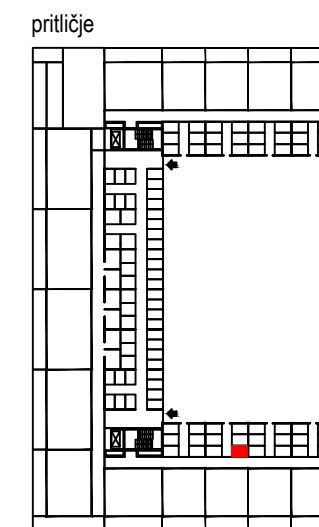
VEČSTANOVANJSKA STAVBA DIVAČA  
komercialna shema

prtiličje stanovanje 13

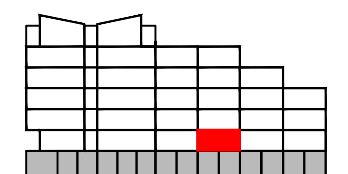
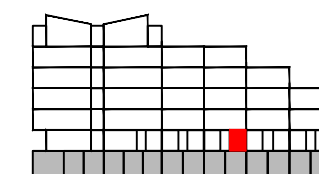
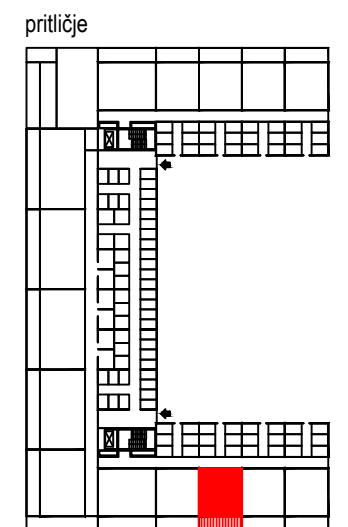


STANOVANJE št. 13 - GARSONJERA		
oznaka	prostor	površina/m <sup>2</sup>
1	VHOD	5,54
2	KOPALNICA	5,68
3	KUHINJA + BIVALNI PROSTOR	23,04
4	PREDELNE STENE IN OMETI	0,67
<b>A</b>	<b>STANOVANJE</b>	<b>34,93</b>
B	ODPRT BALKON	9,72
C	SHRAMBA - 089 - prtiličje	3,45
<b>A+B+C SKUPNA NETO TLORISNA POVRŠINA</b>		<b>48,10</b>

TLORIS  
pozicija shrambe



pozicija stanovanja



PREREZ

