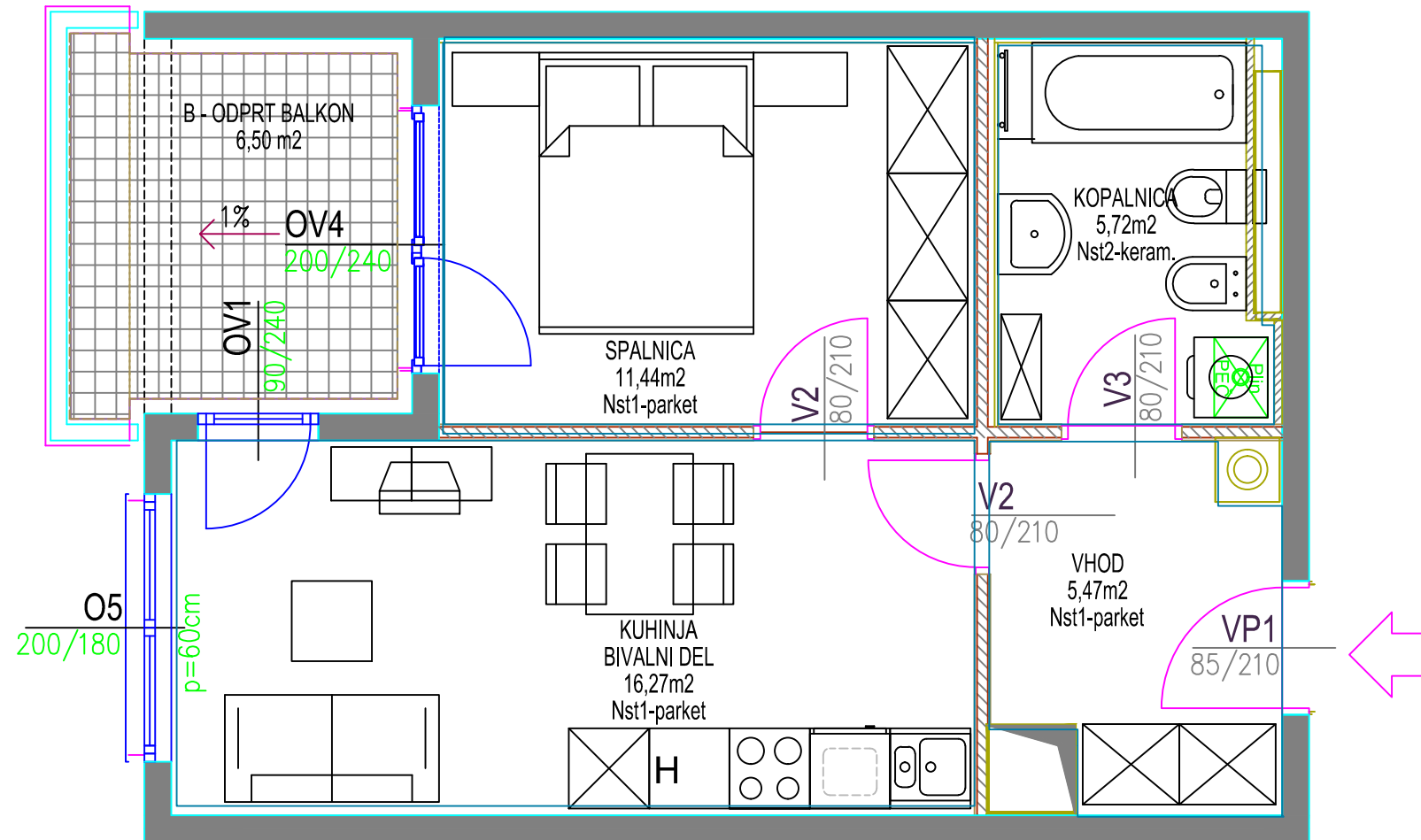


VEČSTANOVANJSKA STAVBA DIVAČA
komercialna shema

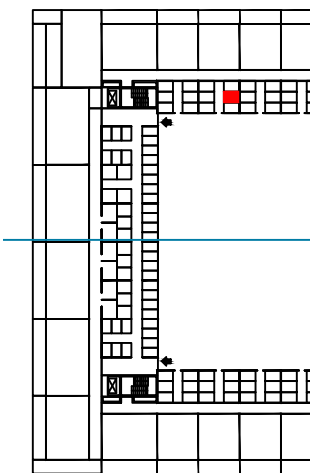
1. nadstropje

stanovanje 18

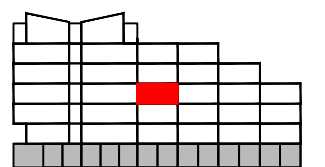
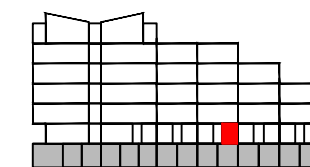
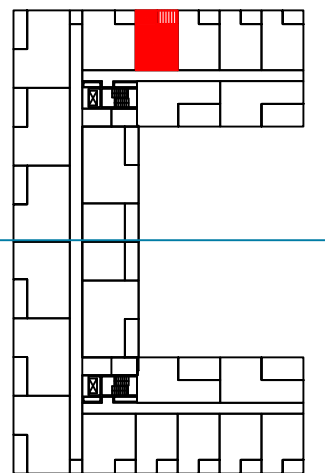


STANOVANJE št. 18 - ENOSOBNO		
oznaka	prostor	površina/m ²
1	VHOD	5,47
2	KOPALNICA	5,72
3	KUHINJA + BIVALNI PROSTOR	16,27
4	SPALNICA	11,44
5	PREDELNE STENE IN OMETI	1,28
A	STANOVANJE	40,18
B	ODPRT BALKON	6,50
C	SHRAMBA - 066 - pritličje	3,22
A+B+C SKUPNA NETO TLOORISNA POVRŠINA		49,90

TLORIS
pozicija shrambe
pritličje



pozicija stanovanja
1. nadstropje



PREREZ

