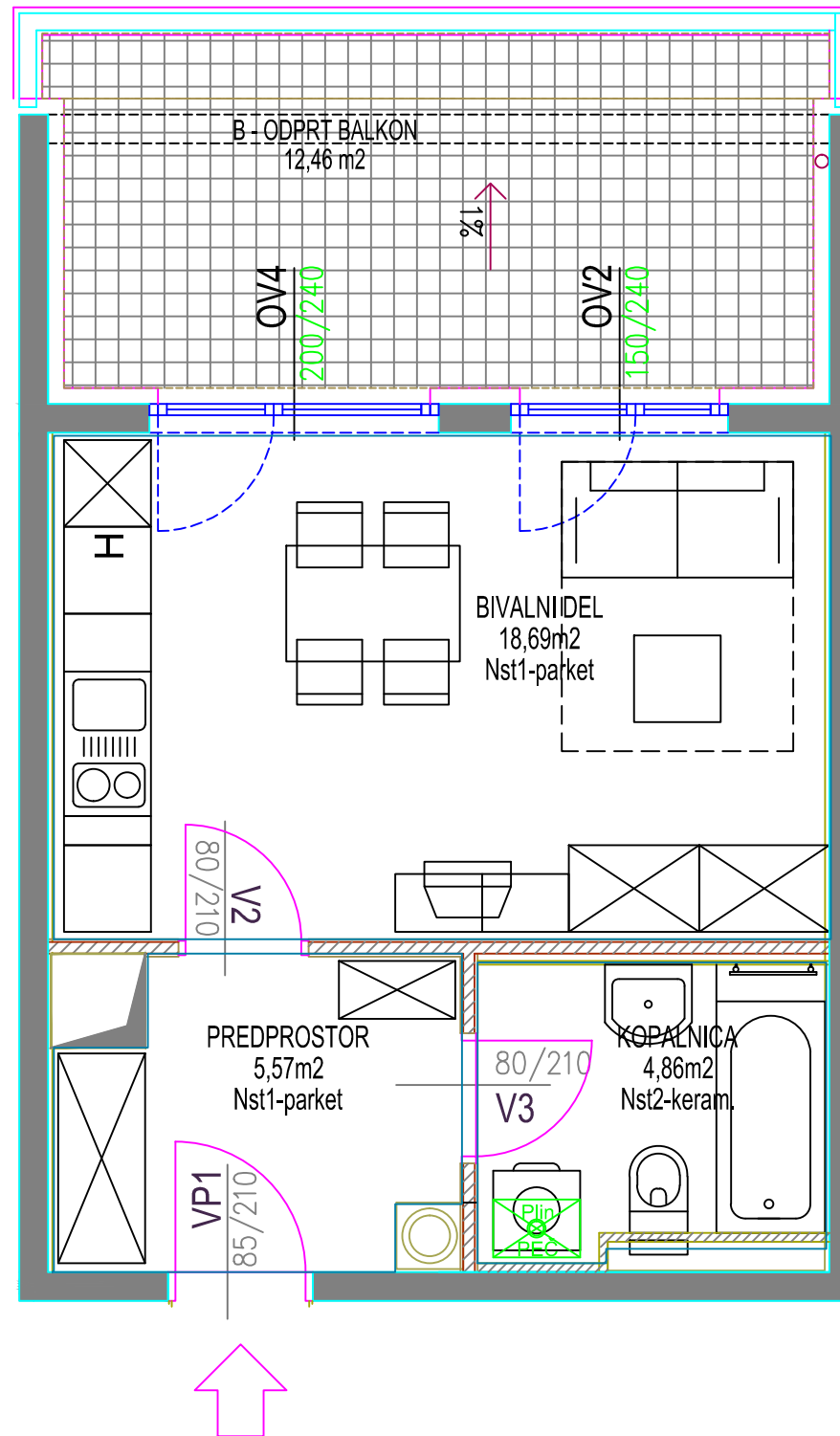


VEČSTANOVANJSKA STAVBA DIVAČA  
komercialna shema

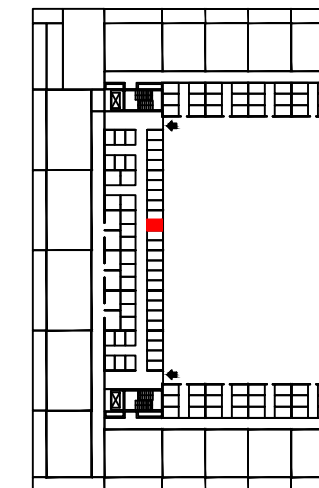
3. nadstropje

stanovanje 71

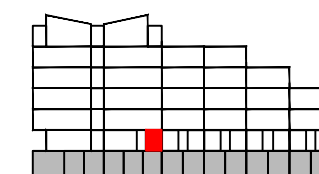
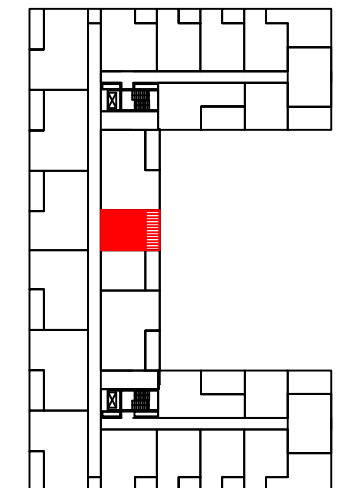


STANOVANJE		št. 71 - GARSONJERA	
oznaka	prostor		površina/m <sup>2</sup>
1	VHOD		5,57
2	KOPALNICA		4,86
3	KUHNJA + BIVALNI PROSTOR		18,69
4	PREDELNE STENE IN OMETI		1,50
<b>A</b>	<b>STANOVANJE</b>		<b>30,62</b>
B	ODPRT BALKON		12,46
C	SHRAMBA - 010 - pritličje		3,04
<b>A+B+C SKUPNA NETO TLORISNA POVRŠINA</b>			<b>46,12</b>

TLORIS  
pozicija shrambe  
pritličje



pozicija stanovanja  
3. nadstropje



PREREZ

