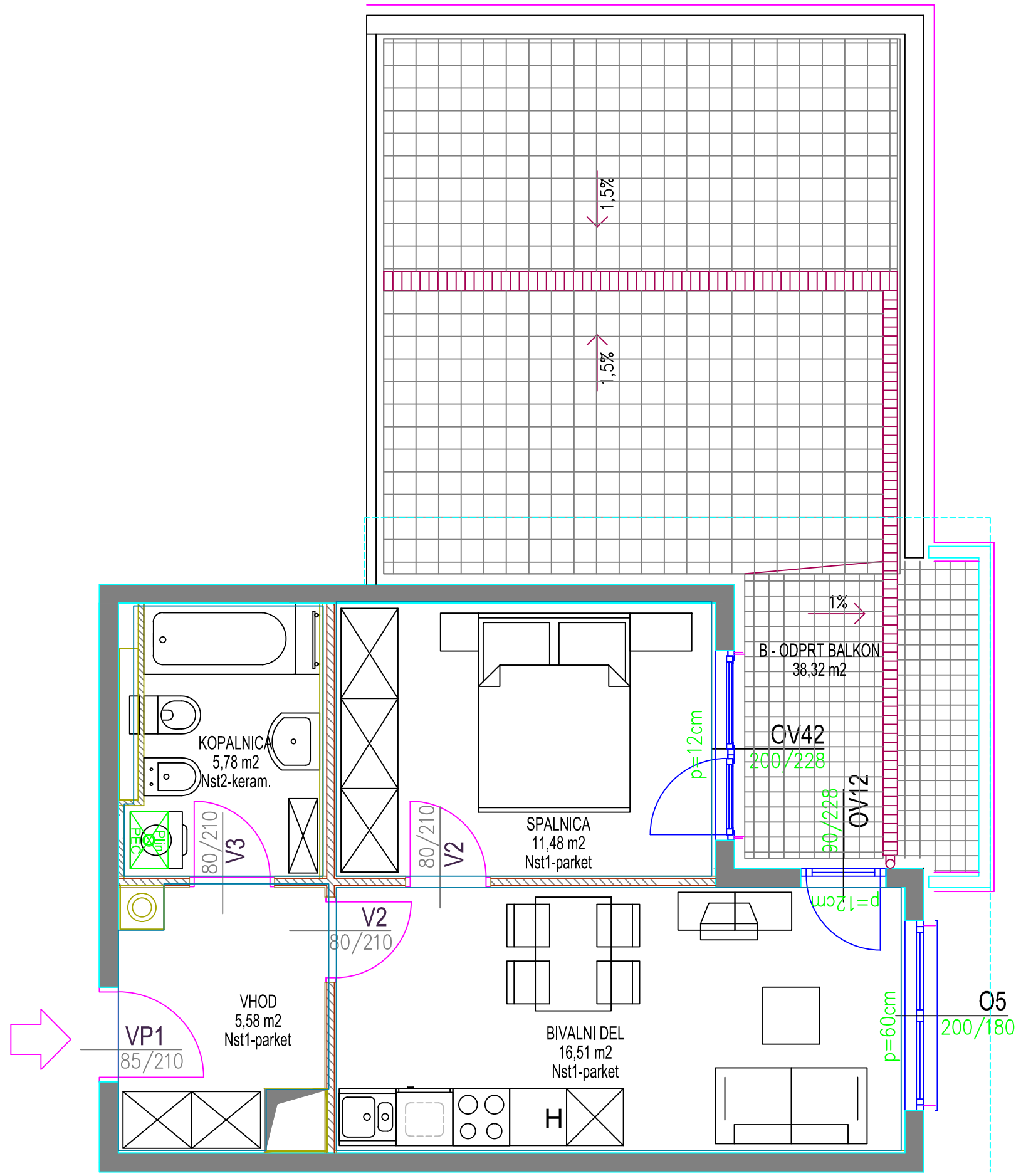


VEČSTANOVANJSKA STAVBA DIVAČA  
komercialna shema

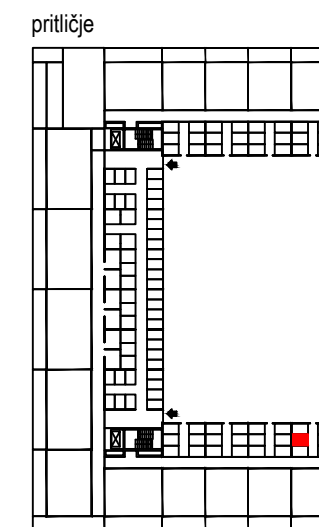
4. nadstropje

stanovanje 101

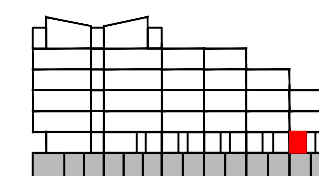
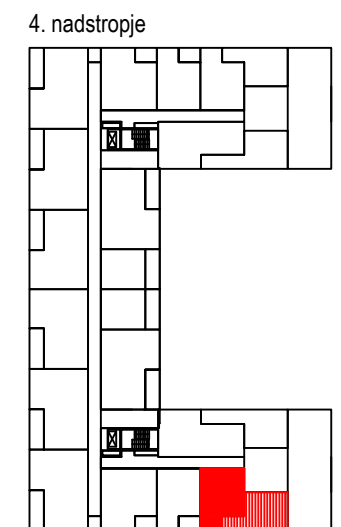


STANOVANJE št. 101 - ENOSOBNO S TERASO		
oznaka	prostor	površina/m <sup>2</sup>
1	VHOD	5,58
2	KOPALNICA	5,78
3	KUHINJA + BIVALNI PROSTOR	16,51
4	SPALNICA	11,48
5	PREDELNE STENE IN OMETI	1,36
<b>A</b>	<b>STANOVANJE</b>	<b>40,71</b>
B	ODPRT BALKON	38,32
C	SHRAMBA - 099 -pritličje	3,22
<b>A+B+C SKUPNA NETO TLORISNA POVRŠINA</b>		<b>82,25</b>

TLORIS  
pozicija shrambe



pozicija stanovanja



PREREZ

