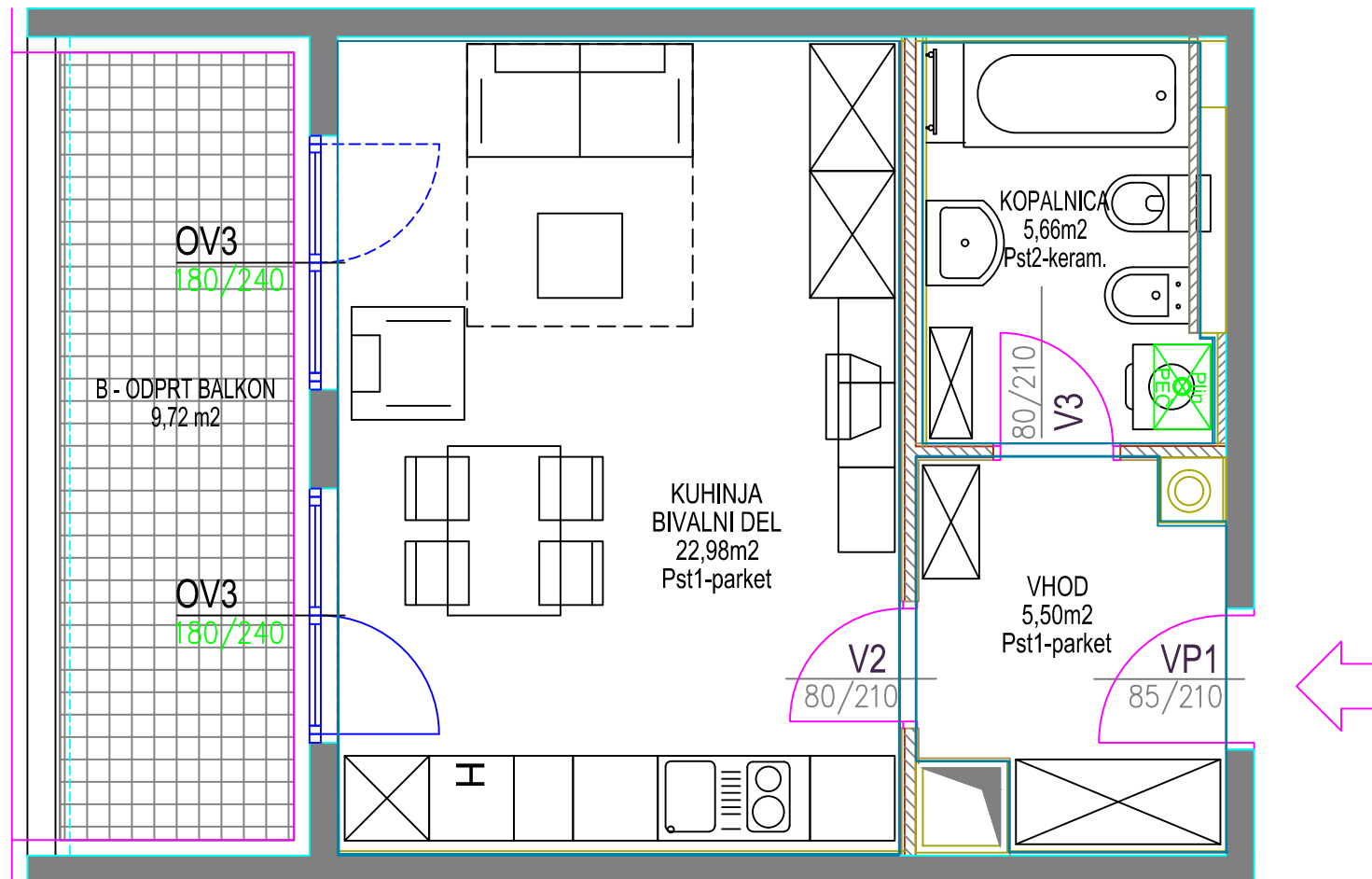


VEČSTANOVANJSKA STAVBA DIVAČA
komercialna shema

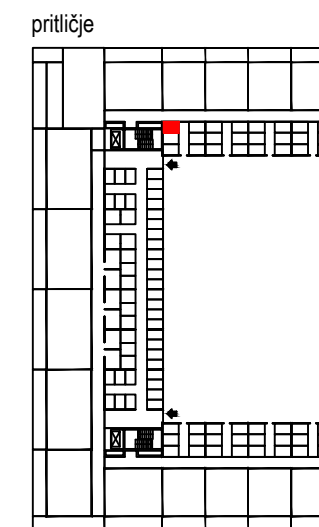
prtiličje

stanovanje 4

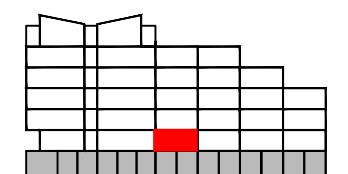
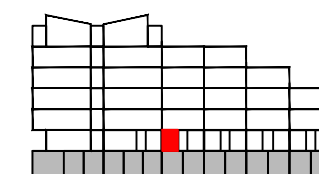
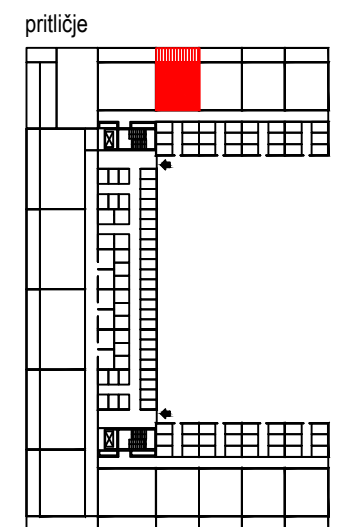


STANOVANJE št. 4 - GARSONJERA		
oznaka	prostor	površina/m2
1	VHOD	5,50
2	KOPALNICA	5,66
3	KUHINJA + BIVALNI PROSTOR	22,98
4	PREDELNE STENE IN OMETI	0,72
A	STANOVANJE	34,86
B	ODPRT BALKON	9,72
C	SHRAMBA - 058 - prtiličje	3,05
A+B+C SKUPNA NETO TLORISNA POVRŠINA		47,63

TLORIS
pozicija shrambe



pozicija stanovanja



PREREZ

