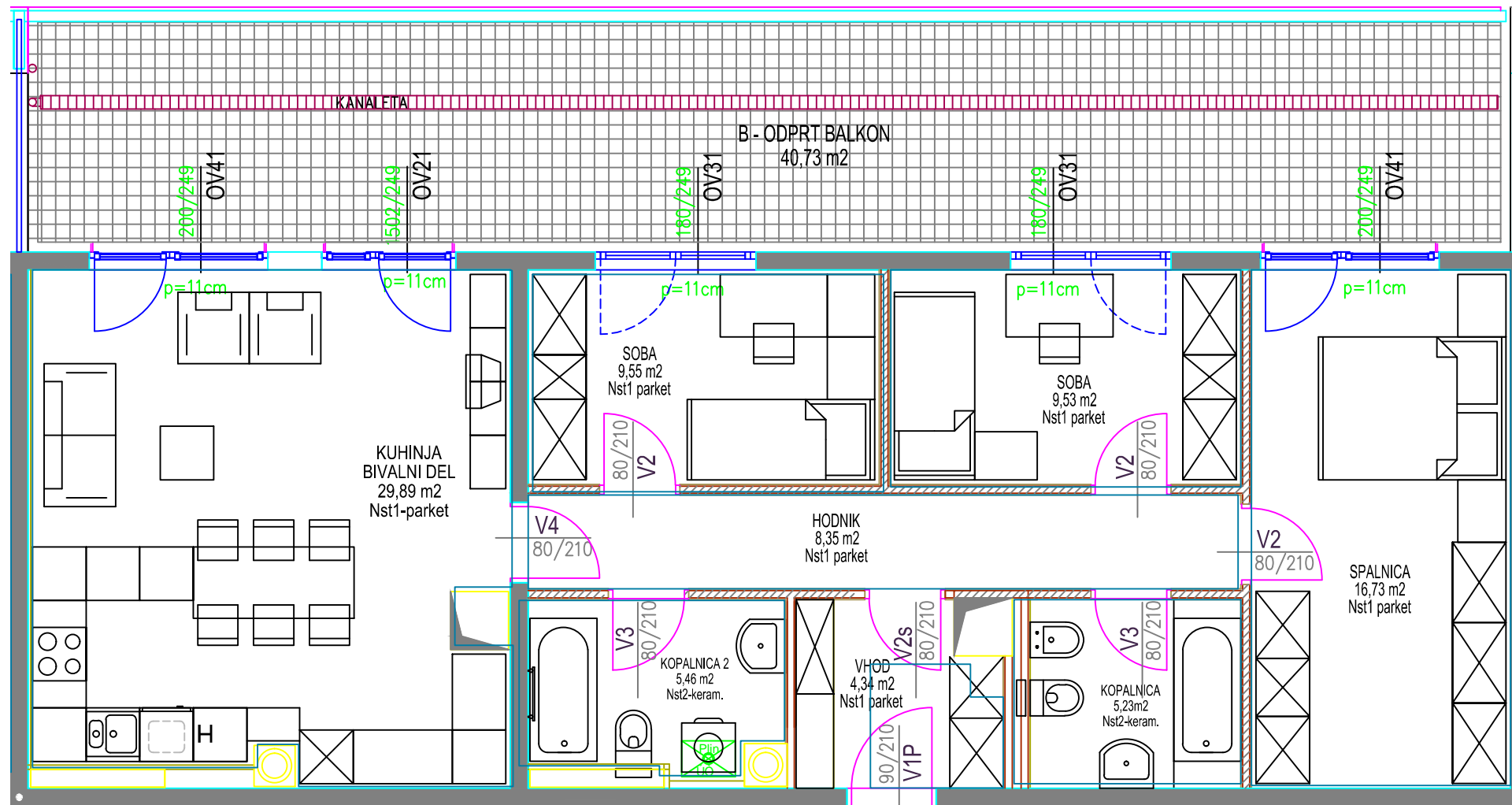


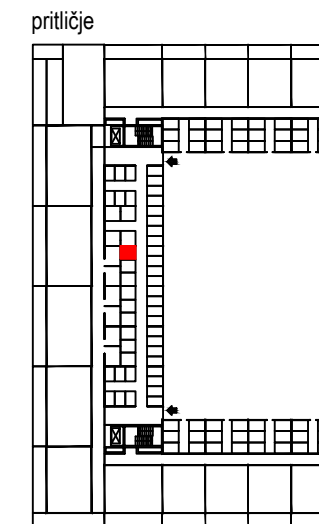
VEČSTANOVANJSKA STAVBA DIVAČA
komercialna shema

mansarda stanovanje 106

STANOVANJE		4S-mz-5.106 - Š TIRISOBNO	
oznaka	prostor		površina/m2)
1	VHOD		4,34
2	HODNIK		8,35
3	KOPALNICA 1		5,46
4	KOPALNICA 2		5,23
5	KUHINJA + BIVALNI PROSTOR		29,89
6	SPALNICA		16,73
7	SOBA 1		9,55
8	SOBA 2		9,53
9	PREDELNE STENE IN OMETI		3,95
A	STANOVANJE		93,03
B	ODPRT BALKON		40,73
C	SHRAMBA - 039 - pritličje		3,78
A+B+C SKUPNA NETO TLORISNA POVRŠINA			137,54

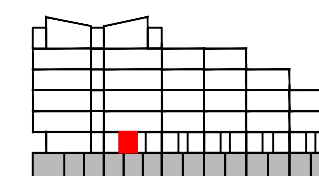
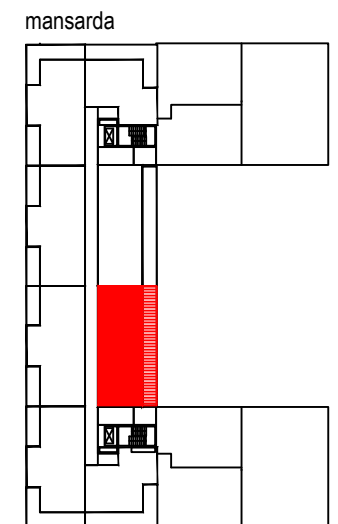


pozicija shrambe



TLORIS

pozicija stanovanja



PREREZ

