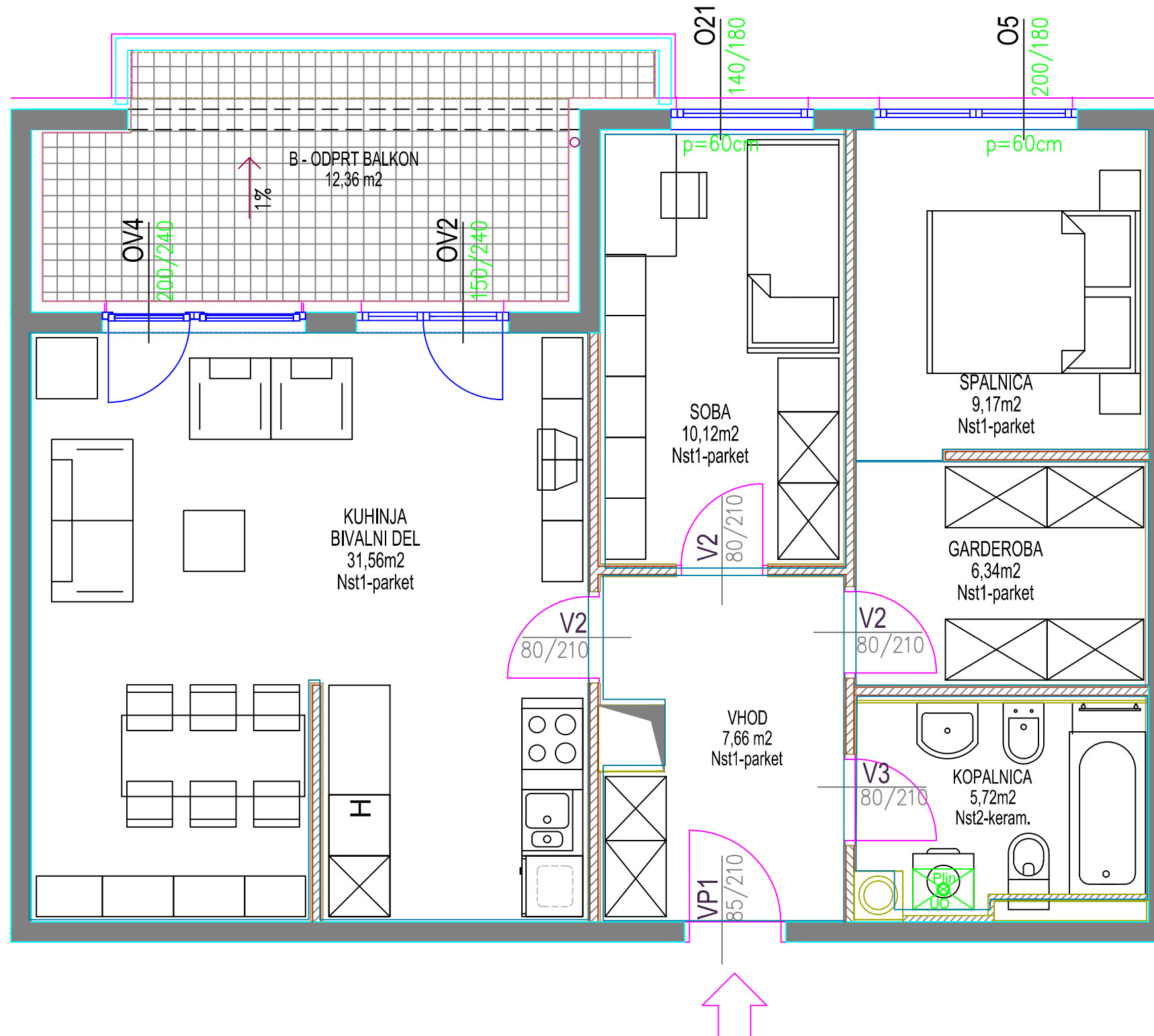


VEČSTANOVANJSKA STAVBA DIVAČA
komercialna shema

4. nadstropje

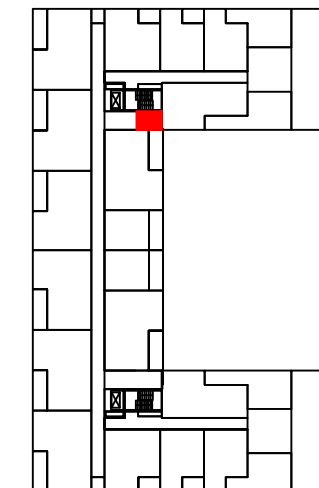
stanovanje 90



STANOVANJE št. 90 - TRISOBNO		
oznaka	prostor	površina/m2
1	VHOD	7,66
2	KOPALNICA	5,72
3	KUHINJA + BIVALNI PROSTOR	31,56
4	SPALNICA	9,17
5	GARDEROBA	6,34
6	SOBA	10,12
7	PREDELNE STENE IN OMETI	2,65
A	STANOVANJE	73,22
B	ODPRT BALKON	12,36
C	shramba -110 -4.nadstropje	7,00
A+B+C SKUPNA NETO TLORISNA POVRŠINA		92,58

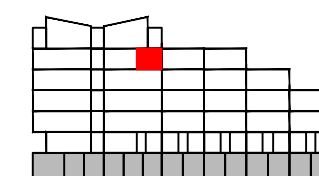
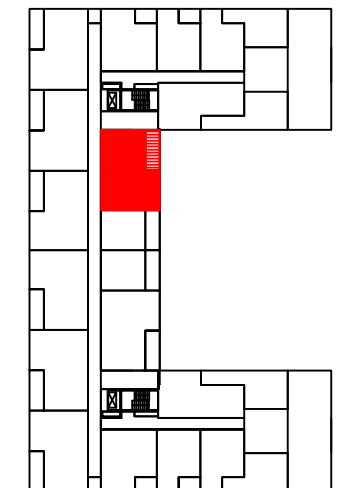
TLORIS
pozicija shrambe

4. nadstropje



pozicija stanovanja

4. nadstropje



PREREZ

