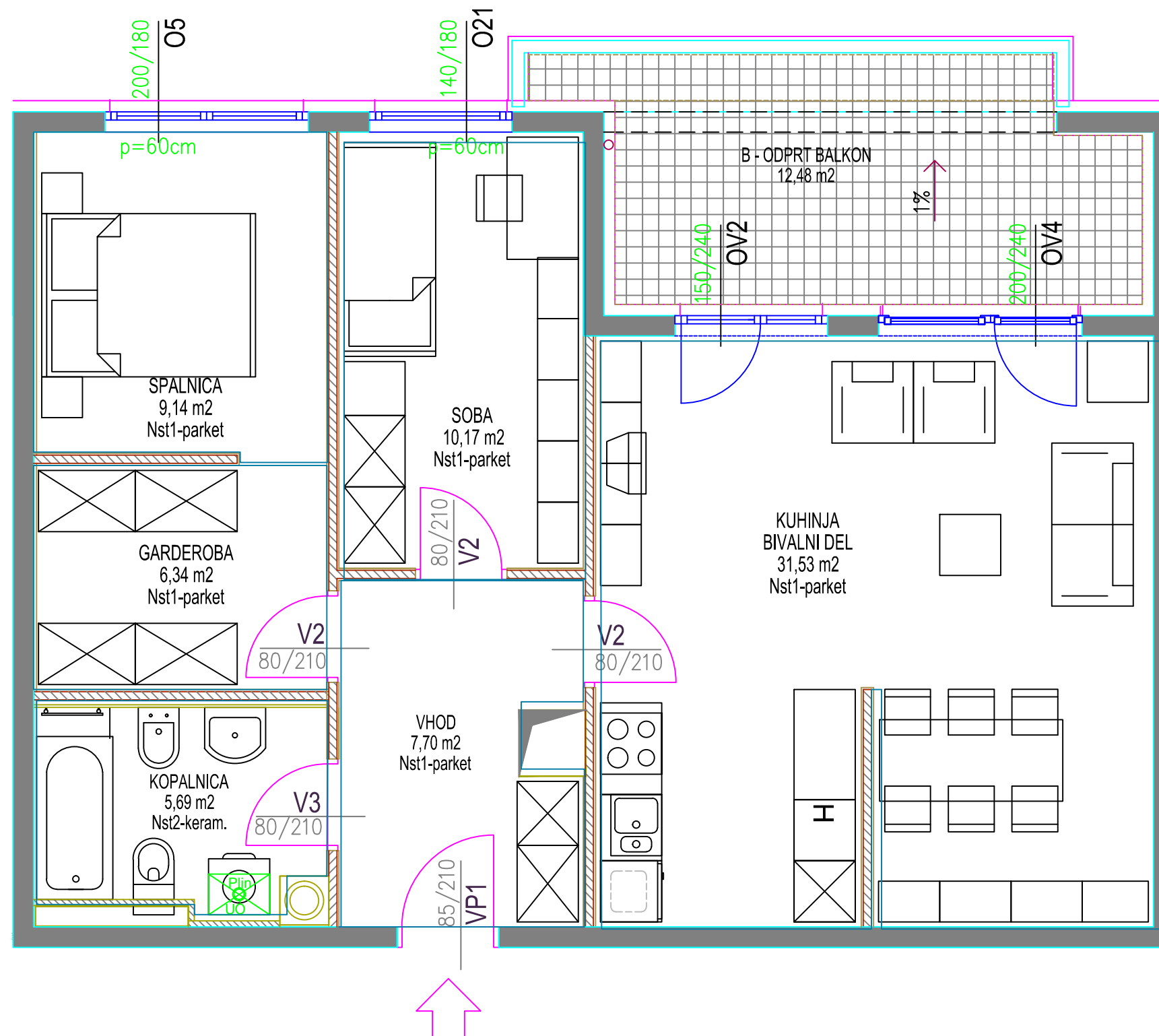


VEČSTANOVANJSKA STAVBA DIVAČA
komercialna shema

4. nadstropje

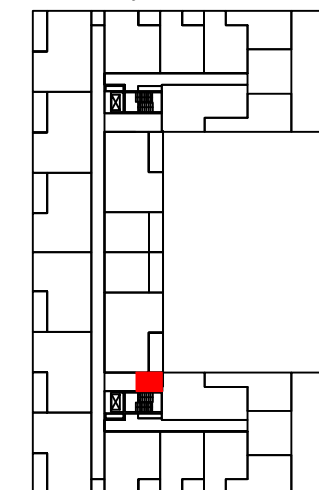
stanovanje 93



STANOVANJE št. 93 - TRISOBNO		
oznaka	prostor	površina/m ²
1	VHOD	7,70
2	KOPALNICA	5,69
3	KUHINJA + BIVALNI PROSTOR	31,53
4	SPALNICA	9,14
5	SOBA	10,17
6	GARDEROBA	6,34
7	PREDELNE STENE IN OMETI	2,66
A	STANOVANJE	73,23
B	ODPRT BALKON	12,48
C	shramba -111 -4.nadstropje	7,00
A+B+C SKUPNA NETO TLORISNA POVRŠINA		92,71

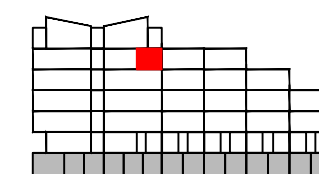
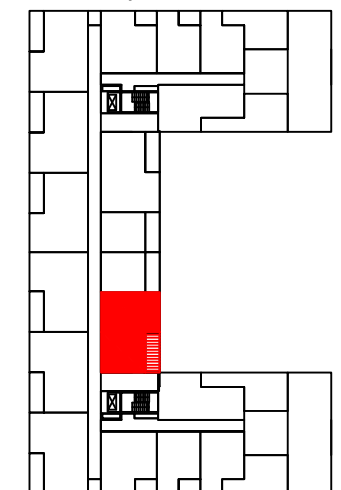
TLORIS
pozicija shrambe

4. nadstropje



pozicija stanovanja

4. nadstropje



PREREZ

