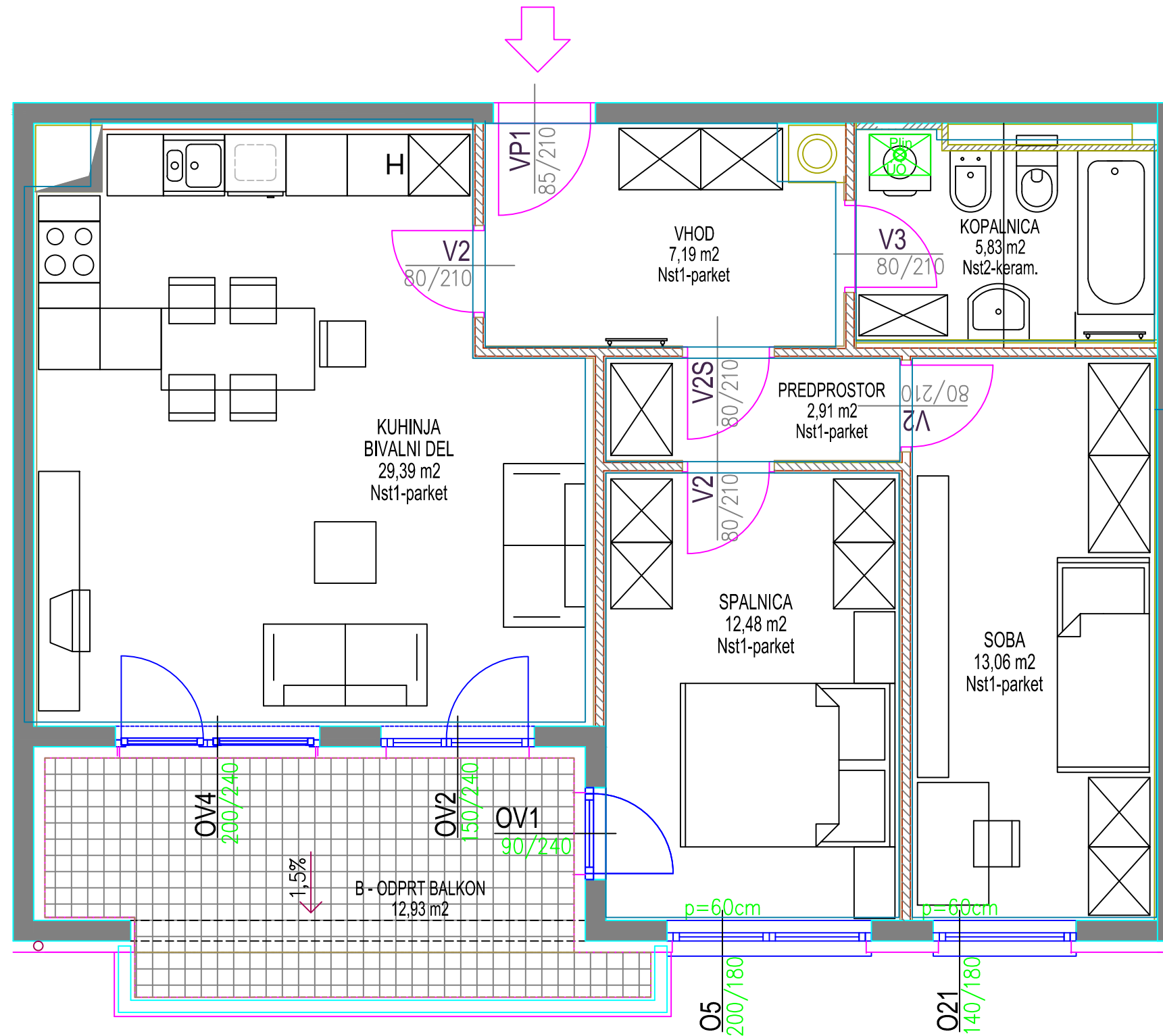


VEČSTANOVANJSKA STAVBA DIVAČA
komercialna shema

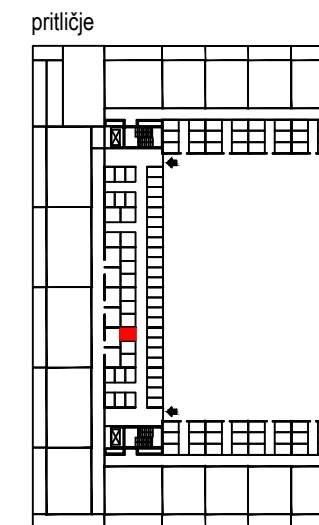
4. nadstropje

stanovanje 96

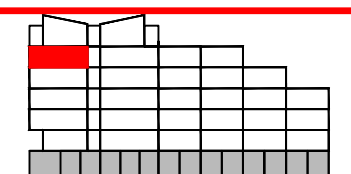
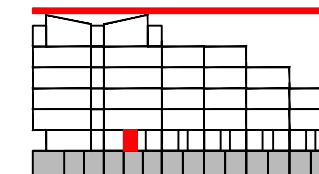
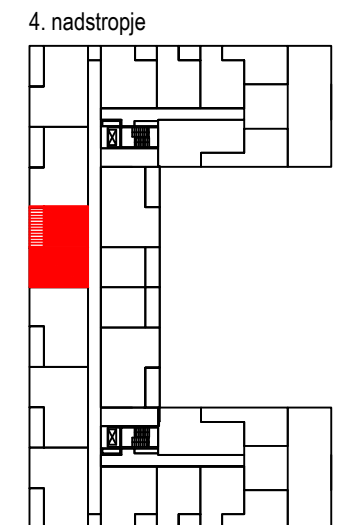


STANOVANJE		št. 96 - TRISOBNO	
oznaka	prostor		površina/m ²
1	VHOD		7,19
2	PREDPROSTOR		2,91
3	KOPALNICA		5,83
4	KUHINJA + BIVALNI PROSTOR		28,39
5	SPALNICA		12,48
6	SOBA		13,07
7	PREDELNE STENE IN OMETI		3,92
A	STANOVANJE		73,79
B	ODPRT BALKON		12,93
C	SHRAMBA - 033 -pritličje		3,78
A+B+C SKUPNA NETO TLORISNA POVRŠINA			90,50

TLORIS
pozicija shrambe



pozicija stanovanja



PREREZ

